



POWER-LINK

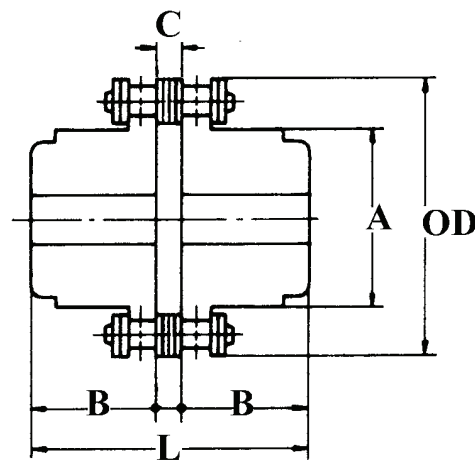
PLI COUPLINGS *Chain*

Chain Coupling	Chain Type	Outside Diameter	Bore		Dimensions				Wgt. Lbs.
			Stock	Max	L	A	B	C	
CB4012	RC40-2	2 13/32	0.472	0.866	3.126	1.417	1.417	0.291	1
CB4016	RC40-2	3 1/32	0.531	1.260	3.441	2.028	1.575	2.910	2
CB5016	RC50-2	3 25/32	0.630	1.575	3.925	2.520	1.772	0.382	3
CB5018	RC50-2	4 3/16	0.630	1.772	3.925	2.894	1.772	0.382	4
CB6018	RC60-2	5	0.787	2.205	4.862	3.524	2.205	0.453	7
CB6020	RC60-2	5 1/2	0.787	2.632	4.862	4.035	2.205	0.453	8
CB6022	RC60-2	5 61/64	0.787	2.795	4.862	4.528	2.205	0.453	11
CB8018	RC80-2	6 21/32	0.787	3.150	5.559	4.528	2.480	0.598	15
CB8020	RC80-2	7 19/64	0.787	3.543	5.717	4.921	2.559	0.598	17
CB8022	RC80-2	7 61/64	0.787	3.937	6.189	5.591	2.796	0.598	23
CB10020	RC100-2	8 1/2	-	4.500	7.000	6.438	3.250	0.635	28

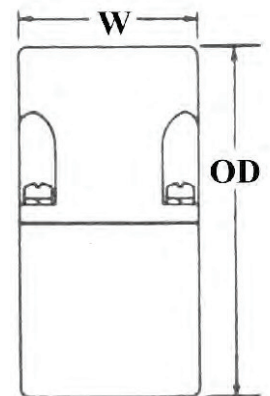
Finish Bores	Bore Sizes available										
	5/8	3/4	7/8	1	1 1/8	1 1/4	1 3/8	1 7/16	1 1/2	1 3/4	1 15/16
CB4016	X	X	X	X	X	X	X				
CB5016		X	X	X	X	X	X		X		
CB5018				X		X			X	X	
CB6018						X	X	X	X	X	X

*All other bore sizes not shown above we machine in house.

Chain Coupling



Covers



ACCESSORIES