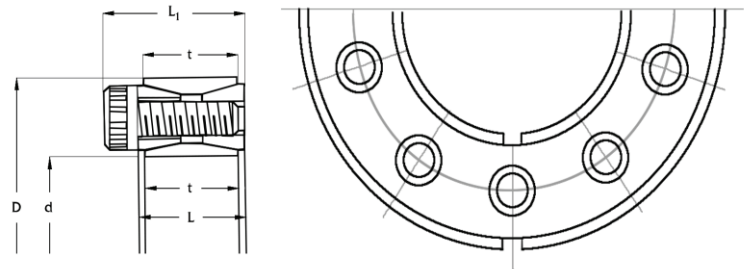


Power-Lock number	Dimensions					Locking Screws		Install Torque (ft. lbs.)	Machining tolerance inches D +	Maximum Transmitted		Weight (Lbs.)
	d	D	L	t	L1	Qty.	Size			Torque (ft. lbs.)	Thrust (lbs.)	
PL-075	3/4	1.850	0.787	0.669	1.024	8	M6 x 18	11	0.002	234	7500	0.46
PL-100	1	1.969	0.787	0.669	1.024	9	M6 x 18	11	0.002	352	8430	0.48
PL-112	1 1/8	2.159	0.787	0.669	1.024	10	M6 x 18	11	0.002	440	9370	0.53
PL-125	1 1/4	2.362	0.787	0.669	1.024	12	M6 x 18	11	0.002	586	11250	0.66
PL-143	1 7/16	2.559	0.787	0.669	1.024	14	M6 x 18	11	0.002	786	13120	0.75
PL-150	1 1/2	2.559	0.787	0.669	1.024	14	M6 x 18	11	0.002	820	13120	0.71
PL-162	1 5/8	2.953	0.945	0.787	1.260	12	M8 x 22	26	0.002	1381	20390	1.23
PL-175	1 3/4	2.953	0.945	0.787	1.260	12	M8 x 22	26	0.002	1487	20390	1.23
PL-193	1 15/16	3.150	0.945	0.787	1.260	12	M8 x 22	26	0.002	1646	20390	1.23
PL-200	2	3.346	0.945	0.787	1.260	14	M8 x 22	26	0.003	1983	23790	1.47
PL-243	2 7/16	3.740	0.945	0.787	1.260	16	M8 x 22	26	0.003	2762	27190	1.65
PL-293	2 15/16	4.528	1.102	0.945	1.496	14	M10 x 25	51	0.003	4632	37840	2.81
PL-300	3	4.724	1.102	0.945	1.496	14	M10 x 25	51	0.003	4730	37840	3.19
PL-343	3 7/16	5.118	1.102	0.945	1.496	16	M10 x 25	51	0.003	6195	43250	3.43
PL-393	3 15/16	5.708	1.302	1.024	1.774	14	M12 x 30	91	0.003	9471	57720	4.60



Keyless Locking Device

- Self-releasing, double taper design permits simple easy-on & easy-off.
- Self-centering, low machining costs.
- No axial movement during installation.
- ability to mount on plain shafting.

ACCESSORIES