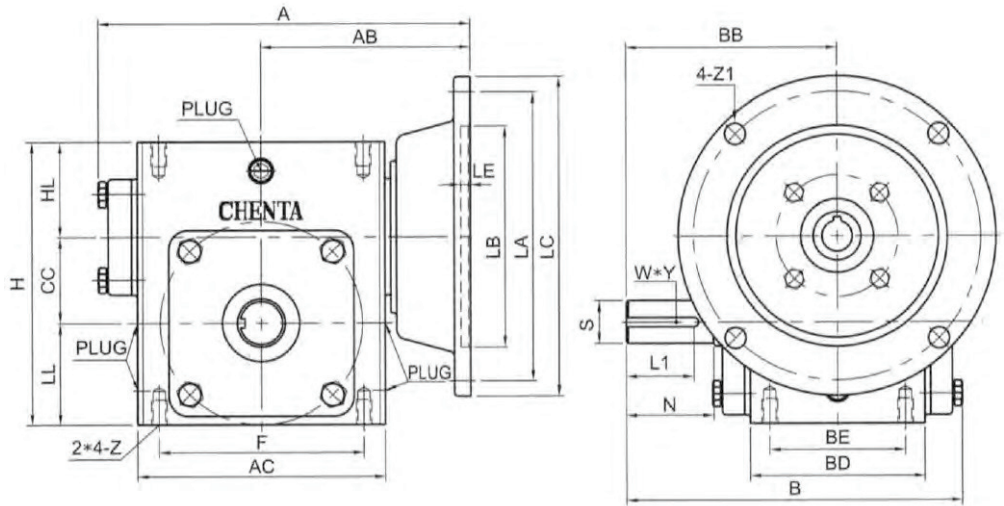




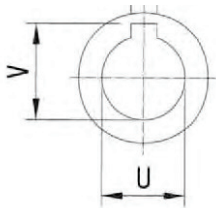
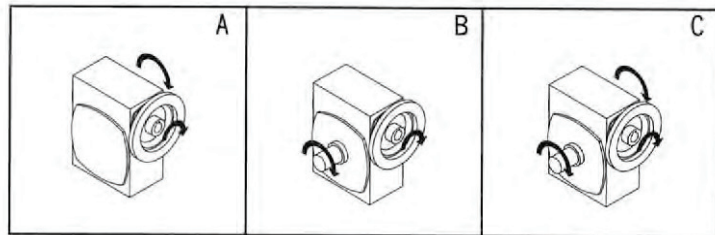
# TSM - DROP IN *Speed Reducer*



Size	Ratio	A	AB	AC	B	BB	BD	BE	CC	F	H	HL	LL	N	Z
T133	1/10	6.090	3.400	3.800	6.100	4.000	2.830	2.000	1.333	3.250	4.656	1.605	1.718	2.000	5/16-18
T150	1/15	7.230	4.065	5.130	6.840	4.310	3.690	2.750	1.540	4.188	5.380	1.938	1.910	1.780	5/16-18
T175	1/20	7.350	4.035	5.060	6.800	4.310	3.560	2.750	1.750	4.188	5.750	1.938	2.062	1.780	5/16-18
T206	1/30	8.090	4.400	5.800	7.300	4.690	3.810	2.880	2.062	5.000	6.375	2.032	2.281	2.090	3/8-16
T238	1/40	8.570	4.630	6.380	7.870	5.090	4.060	2.875	2.375	5.000	6.937	2.062	2.500	2.370	3/8-16
T263	1/50	9.750	5.210	7.200	8.930	5.630	4.830	3.375	2.625	6.375	8.000	2.437	2.938	2.620	3/8-16
T325	1/60	11.560	6.340	9.000	10.860	7.060	5.750	4.000	3.250	7.500	9.375	2.625	3.500	3.250	7/16-14

Unit: Inch,

GEAR REDUCERS



Input-Bore

Size	Input Shaft		Output Shaft			Nema Frame	Flange					Nema Frame
	U	T*V	L1	S	W*Y		LA	LB	LC	LE	Z1	
T133	0.625	3/16*3/32	1.000	0.625	3/16*3/32	56C	5.875	4.500	6.500	0.157	0.433	56C
T150	0.625	3/16*3/32	1.000	0.750	3/16*3/32	56C	5.875	4.500	6.500	0.157	0.433	56C
T175	0.625	3/16*3/32	1.000	0.875	3/16*3/32	56C	5.875	4.500	6.500	0.157	0.433	56C
T206	0.625	3/16*3/32	1.250	1.000	1/4*1/8	56C	5.875	4.500	6.500	0.157	0.433	56C
T238	0.625 0.875	3/16*3/32	1.250	1.125	1/4*1/8	56C 143T	5.875	4.5	6.5	0.157	0.433	56C 143T
T263	0.875	3/16*3/32	1.938	1.125	1/4*1/8	143T 145T	5.875	4.5	6.5	0.197	0.433	143T 145T
T325	1.125	1/4*1/8	2.438	1.375	5/16*5/32	182T 184T	7.250	8.500	9.000	0.236	0.551	182T 184T