

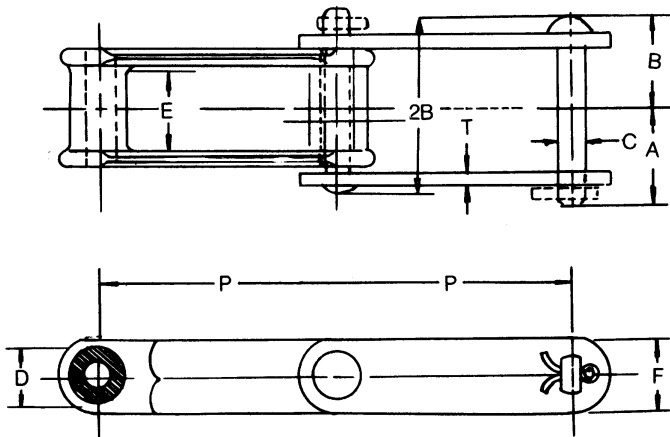


# COMBINATION *Conveyor Chains*

CONVEYOR CHAINS

Chain No.	Pitch in Inches	No. of Links in 10 feet	Aver. Wgt. per ft. lbs.	max working load in lbs.	Average Ultimate Strength lbs.	Dimensions in inches						
						A	B	C	D	E	F	T
C-55	1.631	74	2.0	1,110	9,000	1 1/16	29/32	3/8	23/32	11/16	3/4	3/16
C-77	2.308	52	2.3	1,360	11,000	1 1/32	1 5/64	7/16	23/32	11/16	7/8	3/16
C-102B	4.000	30	6.8	4,000	24,000	2 1/4	2 7/32	5/8	1	2	1 1/2	3/8
C-110	6.000	20	6.0	4,000	24,000	2 5/16	2 5/32	5/8	1 9/32	1 15/16	1 1/2	3/8
C-111	4.760	25 1/2	9.8	5,950	36,000	2 21/32	2 15/32	3/4	1 7/16	2 3/8	1 3/4	3/8
C-131	3.075	39	6.5	3,220	24,000	1 29/32	2 23/32	5/8	1 1/4	1 1/8	1 1/2	3/8
C-188	2.609	46	3.6	1,950	14,000	1 13/32	1 9/32	1/2	7/8	15/16	1 1/8	1/4

\* Please Note C102B is a cottered Chain & C188, C131 are also available Cottered.



Dimension Diagram of Combination Chain

### Combination Chain Attachments

Chain No.	F2	K1	K2	S1
C-55		X		
C-77		X		
C-102B			X	X
C-110			X	
C-111	X		X	X
C-131	X	X	X	
C-188	X	X	X	



Power-Link does yearly tests on all our Pintle & Combo. chains, through a third party, reports are available.